

Lynx Formula Vee History

I had been racing a front engine C modified in SCCA races that I had built in Louisiana in 1959. I also started the design of a new mid engine car. However, before starting construction, Lotus announced the new "Lotus 30" (a mid-engine C-Modified) that would be sold for \$6,000. I felt that I could not compete successfully against the new Lotus, so I turned to the new formula vee series.

The first Lynx Formula Vee was built in a single car garage with a dirt floor in Detroit Michigan in 1964. The only fabricating tools I had at that time were an Oxygen-Acetylene torch, electric hand drill, handheld saber saw, and a hack saw with a good supply of blades. The steel tubing for the frame was hand bent by packing the tube with sand and using the torch. We made a body buck using plywood and foam. Female fiber glass molds were made from this buck. The body was three layers of ten-ounce fiberglass cloth using polyester resin.

John Mills and I worked at Ford in advance engineering. We became friends and eventually partners building Lynx cars. We decided that to be able to afford to go racing, we would need to sell the car to other enthusiasts. John used his experience working with ad agencies in Detroit to create the Lynx brochures. We ran an ad in Road and Track Magazine offering Formula Vee kits. To our complete surprise, we got as many as 10 inquiries a day!

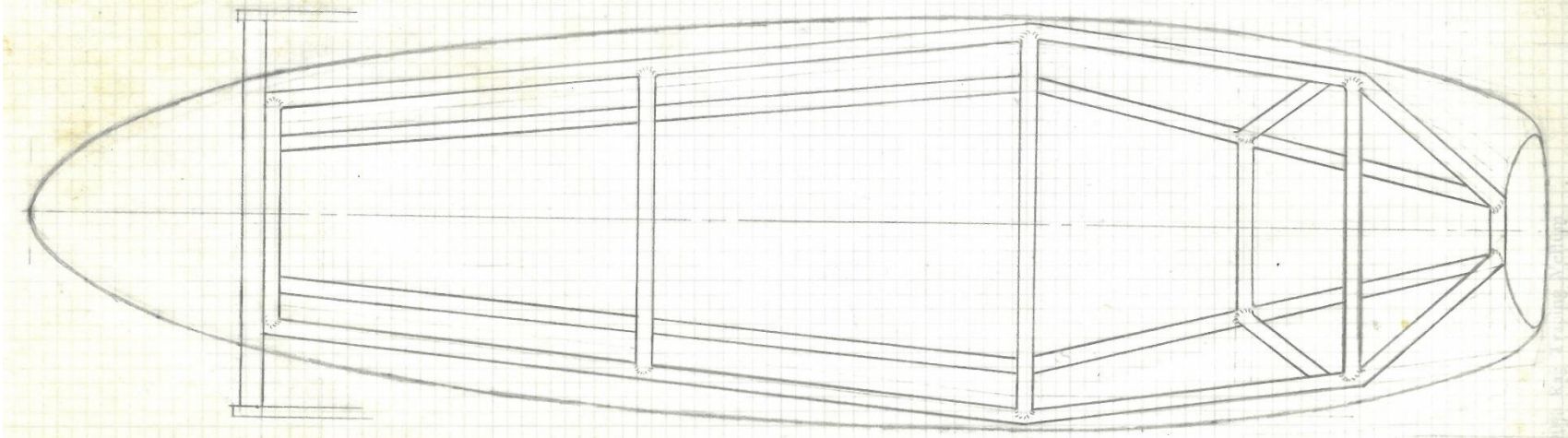
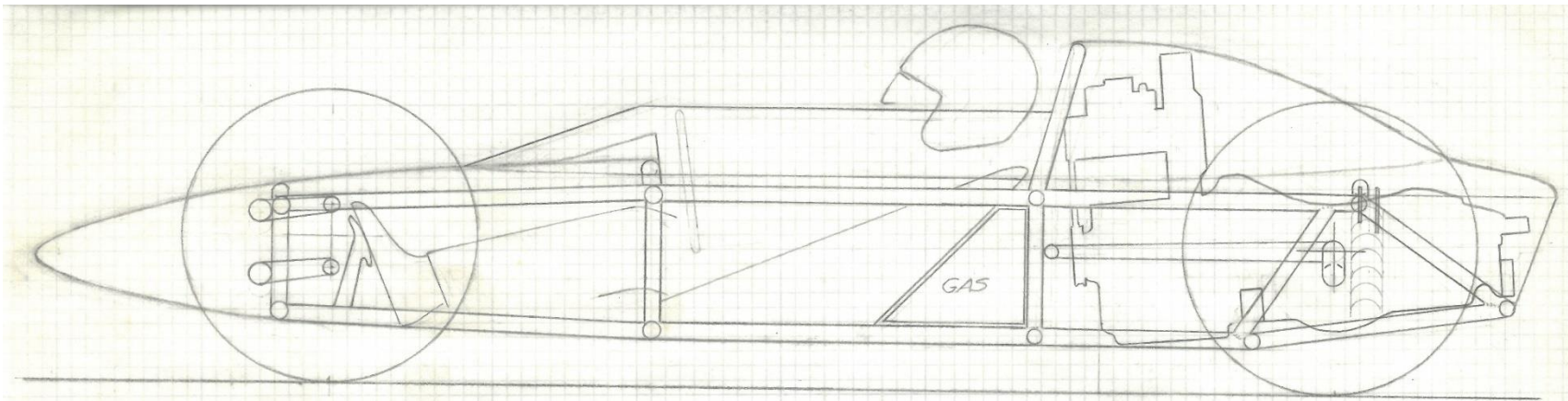
Later, we moved to a small building where we fabricated, assembled, and sold FVs, and SFVs ready to race. Also purchased a dynamometer where we developed and sold engines for our cars. We probably sold about 50 cars.

Because I was very busy designing other race cars, I did not have proper time to spend at Lynx, so I sold my interest to John. Later, Ford Motor Company bought the name Lynx from John. Thus ended the Lynx formula cars.

-Bob Riley

Contents:

Scale Drawing	1
Frame Welded in Plywood Fixture	2
Chassis with Volkswagen Suspension and Engine.....	2
Bea Holding the First Frame	2
Driver Fitting	2
Body Buck of Plywood and Foam Built Over Tube Frame	3
Tail Mold of Fiberglass Cloth and Polyester Resin.....	3
Body Buck Front View	3
Body Buck Rear View	3
Chassis Components	4
Shift Assembly.....	5
Wiring Diagram	6
Gear Ratios	7
Parts and Kit Cost	8
Brochure	9
First Race at Waterford Hills Michigan	10
John Mills in First Car	10
Race Record from 1970.....	11
John and I at First Test for Lynx B	12
Post Card Sent to Potential Buyers	12
Jim Herlinger, Our West Coast Dealer	13
Magazine Ad	13
Garrett VanCamp, Winningest Lynx Driver	14
Jim Purcell in Lynx Super Vee, A Good Development Driver and Fast	14



Lynx FV
FIBER GLASS BODY
SCALE 1"=1'-0"

Scale Drawing



Frame Welded in Plywood Fixture



Bea Holding the First Frame



**Chassis with Volkswagen Suspension
and Engine**



Driver Fitting



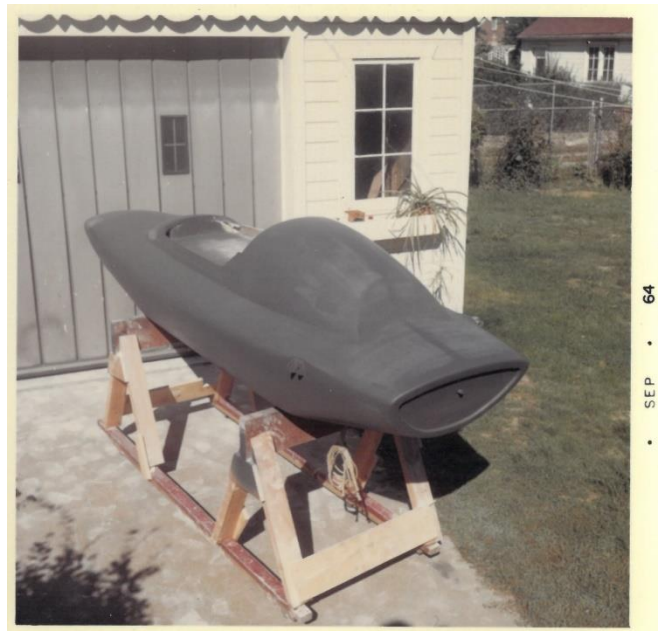
**Body Buck of Plywood and Foam Built
Over Tube Frame**



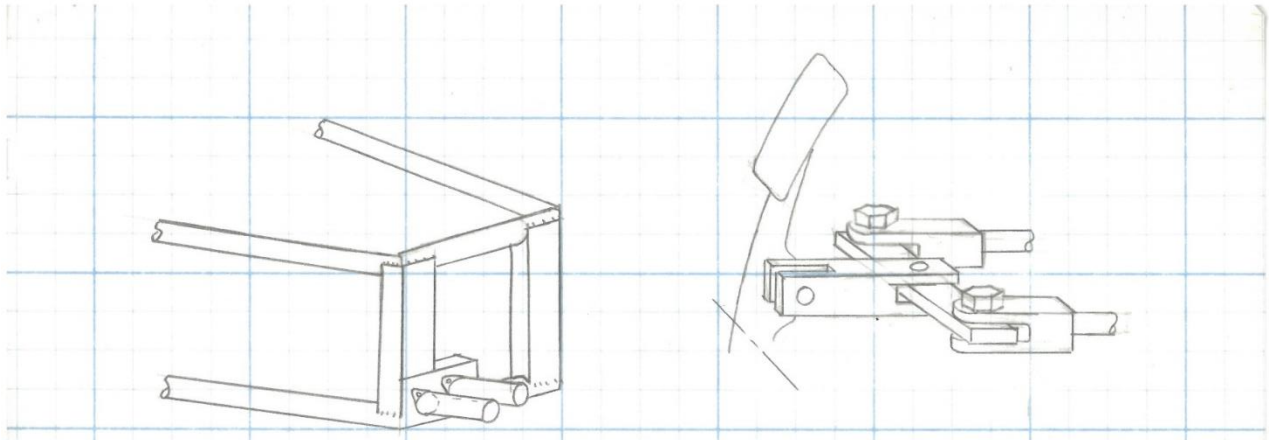
Body Buck Front View



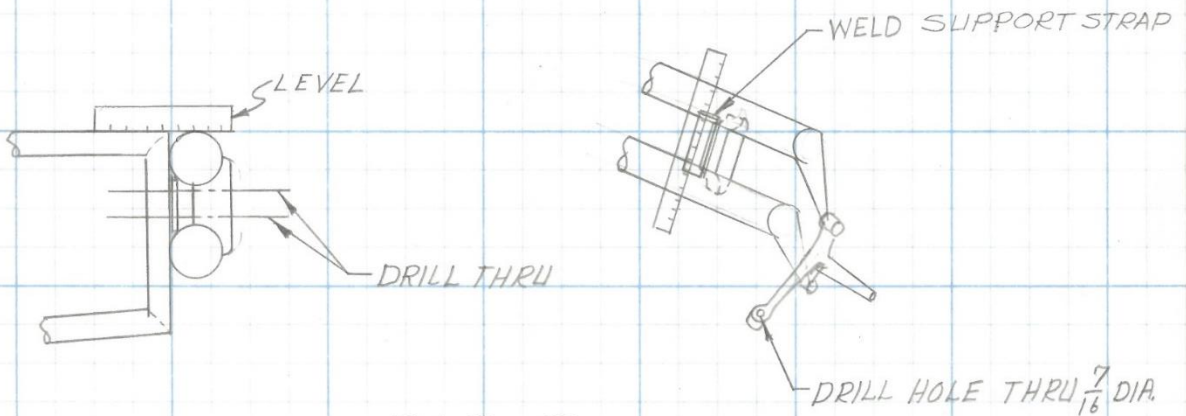
**Tail Mold of Fiberglass Cloth and
Polyester Resin**



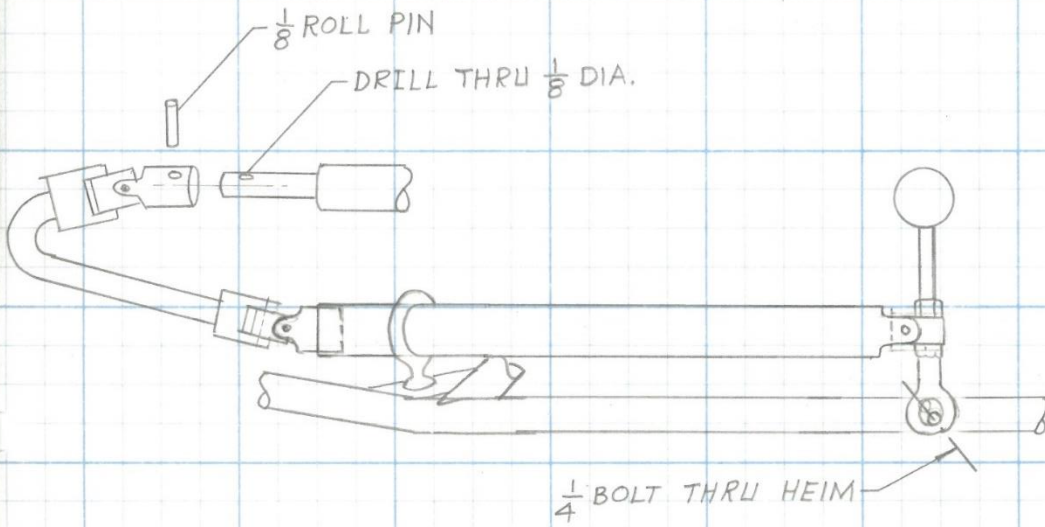
Body Buck Rear View



— FIG 1 —

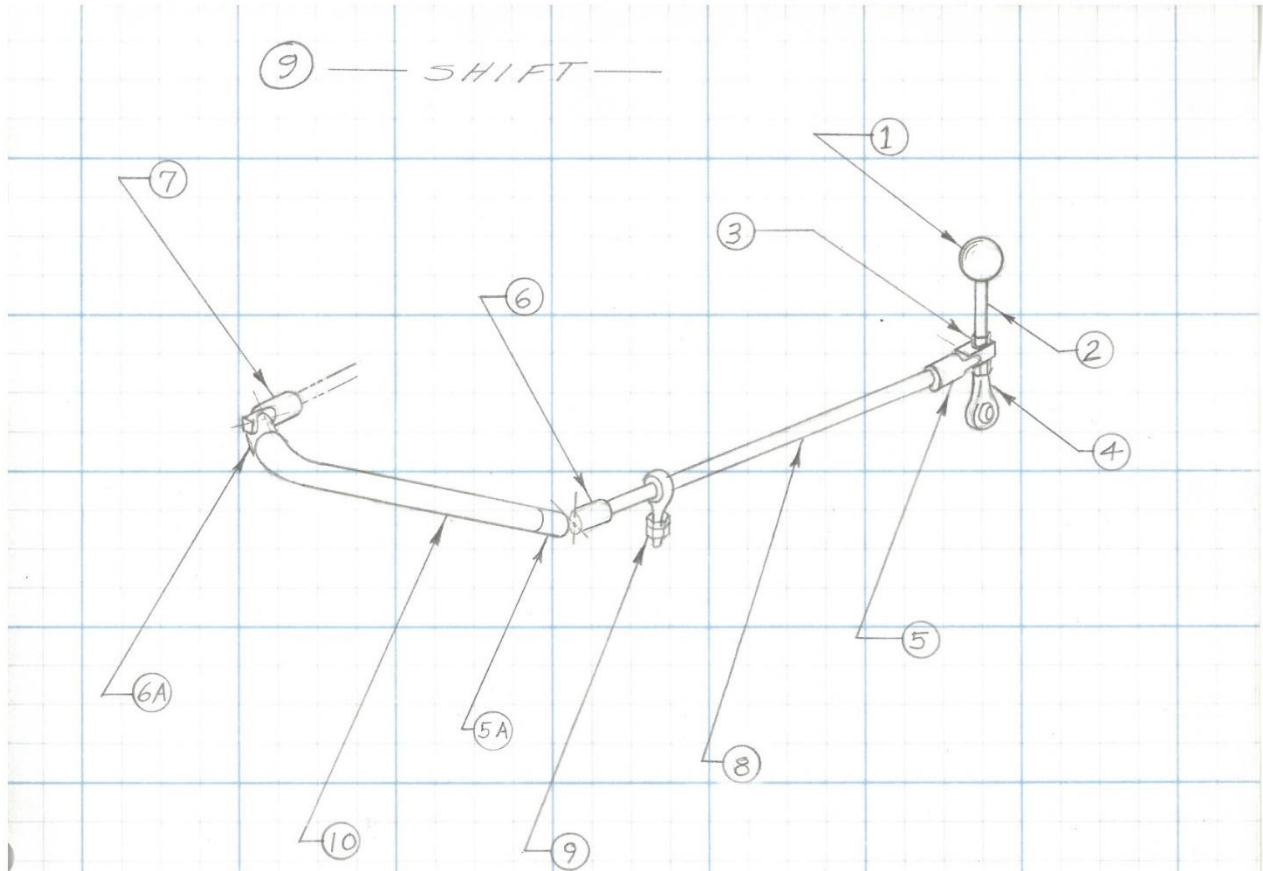


— FIG 2 —



— FIG 3 —

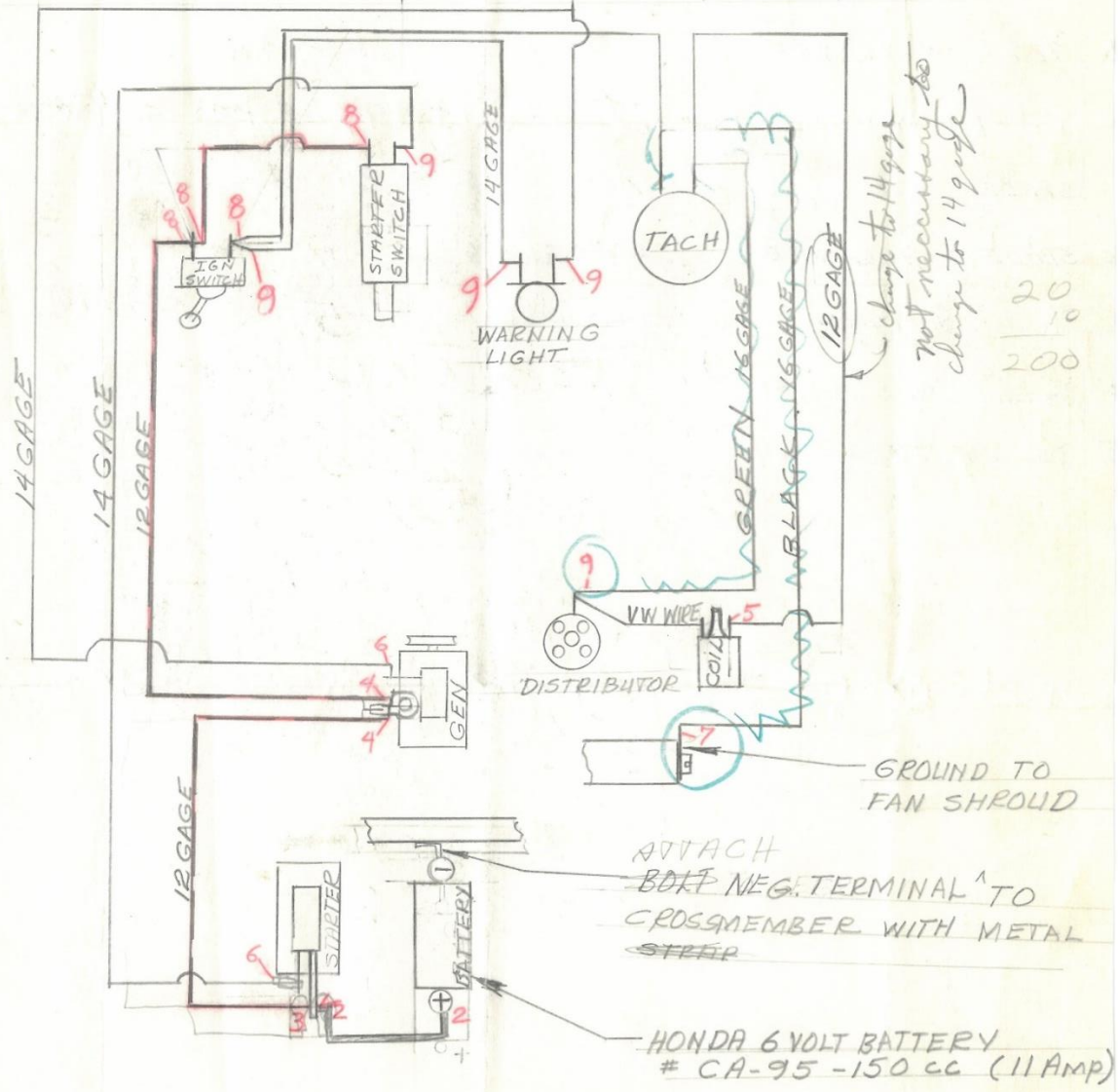
Chassis Components



FIND NO.	ITEM	REMARKS	COST
①	1962 CORVETTE KNOB	5/16 X 18 THREAD RH	.60
②	STUD	5/16 DIA. 5" LONG RH 18 THREAD = LONG RH 24 THREAD = LONG	.10 ?
③	5/16 X 24 LOCK NUT		.03
④	5/16 X 25 FEMALE HEIM	REF 27005	1.57
⑤	1/2 DRIVE UNIVERSAL	SEARS USE OTHER END FOR ⑤A	2.40
⑥	1/2 DRIVE UNIVERSAL	SEARS USE OTHER END FOR ⑥A	2.40
⑦	1/2 DRIVE UNIVERSAL	SEARS USE OTHER END FOR 2ND PIECE	1.20
⑧	7/16" ROD COLD ROLL	LENGTH = 50 1/2"	.30 ?
⑨	7/16 X 25 MALE HEIM	REF 26009	2.19 ⁺¹⁰⁰
⑩	9/16 ID X 1/8 WALL TUBING	LENGTH = MAY USE FOR STEERING	.40 _{cl. to 100}
			11.19
	OXY, ACL, # ROD		.30
	TIME = 2 HRS	x 5.00 = 10.00	10.00
	Profit & Tooling		
		TOTAL	21.49
			- 1.19
			20.30

Shift Assembly

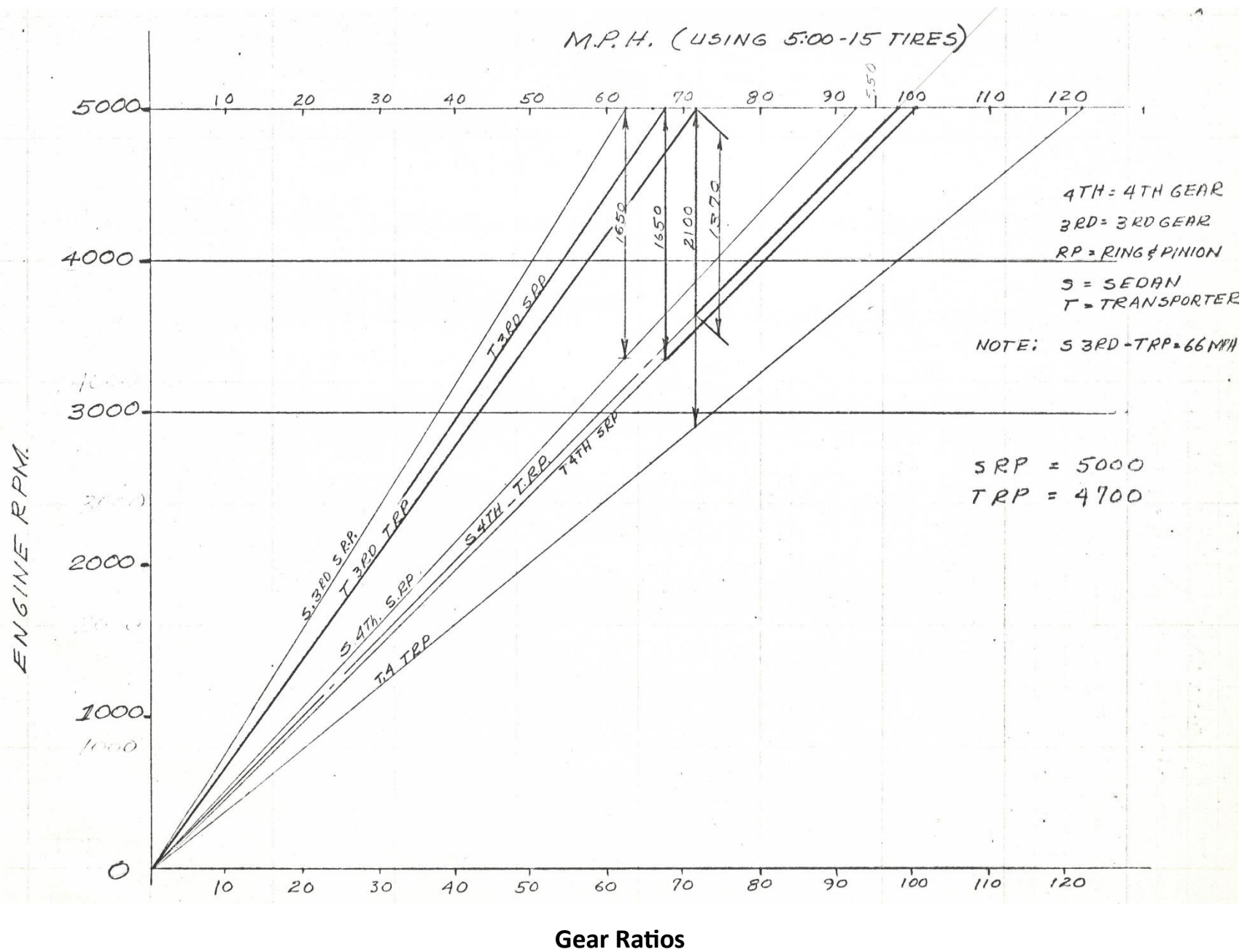
ITEM	VENDOR	COST
1 IGN. SWITCH	SEARS	X
1 PUSH BUTTON SWITCH	SEARS	X 1.00
1 WARNING LIGHT (must have 2 wires coming out)	SEARS	X 70
1 TACH		
14 GAGE WIRE	SEARS,	X
12 GAGE WIRE	SEARS,	X
1 RED WARNING LIGHT BULB 6V	STANDARD	X
1 BATTERY CABLE 12" LG.	WELDING SUPPLY	



FIRING ORDER: 1-4-3-2

NOTE: COIL PLUG

Wiring Diagram



LYNX COMPETITION CARS
23363 Baske Taylor, Michigan

TERMS: Full payment or minimum 50% deposit must accompany all orders. On deposit orders, balance will be C.O.D. Add state sales tax when applicable.

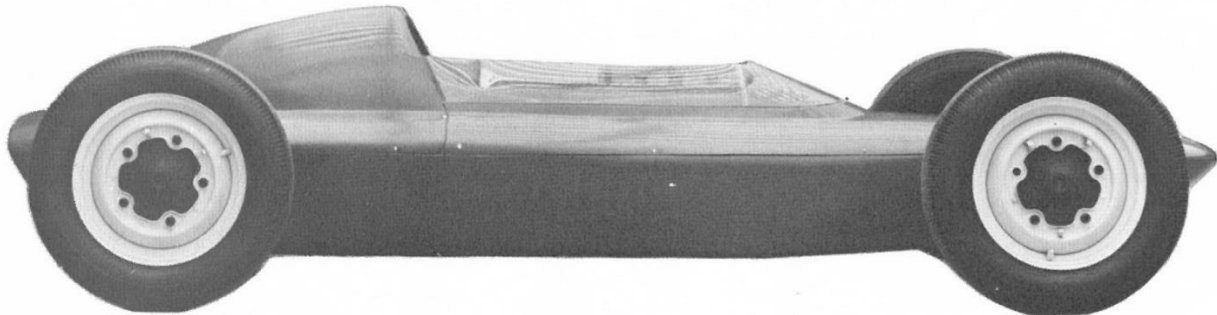
FREIGHT: All shipments will be freight collect. All prices are F.O.B. Taylor, Michigan. Completed kits, bodies, etc., will be shipped by freight or, if under 20 lbs., by U.S. Mail. Specify if special transportation is desired. Crating if necessary is extra.

All prices, terms, conditions and specifications are subject to change without notice.

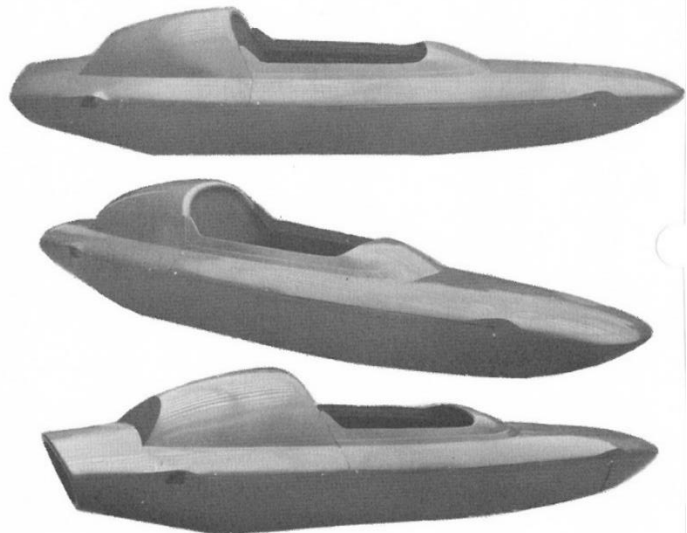
Find No.	Item	No. Req'd	Price Each
1	Frame	1	\$325.00
2	Steering Wheel	1	10.00
3	Steering Shaft & Hub	1	10.00
4	Rear Coil Springs and Retainers	2	13.00
5	Tie Rods	2	10.00
6	7/16 Hiems	6	2.00
7	1" Spacers for Spindles	2	1.00
8	Torque Arms	2	12.00
9	Gear Shift Lever & Assy.	1	25.50
10	Clutch Cable Assy. & Pulley	1	8.00
11	Brake Lines	1	15.00
12	Gas Tank with Fuel Filter	1	30.00
13	Gas Line & Clamps	1	2.00
14	Seat & Mounting Bolts	1	20.00
15	Exhaust Pipes & Spring Clamps	4	10.00
16	Throttle Cable & Fittings	1	5.00
17	Fiberglass Body: Nose, Tail & 2 Sides	1	225.00
18	Dzus Fasteners	12	.35
19	Tachometer	1	29.00
20	Oil Pressure Gage	1	4.00
21	Oil Temp. Gage	1	9.00
22	Battery Charge Light	1	1.00
23	Battery Cable	1	4.00
24	Wiring & Starter Switch	1	15.00
25	Battery Box	1	13.00
26	Front Sus. Support Strap	2	1.00
27	Bushing for Anti-Roll Bar	2	2.00
28	2 Piece Firewall	1	8.00
29	3 Piece Belly Pan	1	12.00
30	Windshield	1	19.00
31	Side Shields	2	4.00
32	Windshield Retainers	11	.20
33	Misc. Bolts & Clamps	1	15.00
34	Instructions	1	5.00
35	Lower Rear Shock Mount	2	5.00
36	Linkage of Dual Master Cyl.	1	10.00
37	Accelerator Pedal	1	7.00
38	"T" Fitting for Dual Brakes	1	.50
	BASIC KIT		\$945.00

Parts and Kit Cost

Features of the Lynx include: a fully reclining seat, enclosed roll bar, 29.5" overall height (measured to top of roll bar), low profile nose configuration for better aerodynamic penetration, lower center of gravity, improved rear suspension design reducing geometric rear wheel steer. These are a few items that will make competition with the Lynx Formula Vee more enjoyable and more representative of true Formula racing.



Body: A laminated body of polyester resin consisting of a color impregnated surface coat and two layers of woven fiberglass cloth. This is a hand lay-up to insure uniform thickness and maximum strength. Designed to comply with minimum cross section and maximum overall length per Formula Vee specifications.



Frame: A true space frame built of *round* steel tubing. Main members of the structure are 1.25" in diameter with .75" triangulation. Wall thickness on this tubing is .50". Roll bar exceeds S.C.C.A. specifications.

Prices*: Fifty per cent of listed prices constitutes an order.

\$225⁰⁰

for BODY

Standard color is white.
Other colors \$25 extra.
Delivery time:

\$1100⁰⁰

for BASIC KIT

Includes all components except VW parts, tires, battery, and upholstery.
Delivery time.

\$2700⁰⁰

for COMPLETE CAR

Ready to race.
Delivery time.

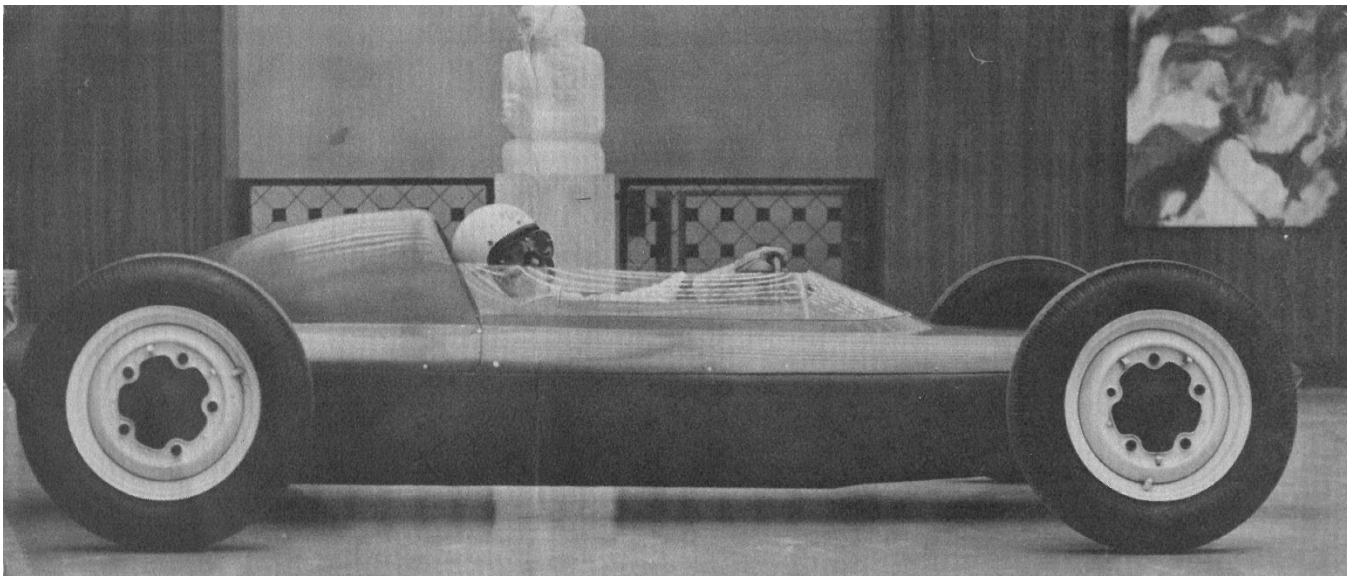
*All prices F.O.B. Taylor, Michigan. Prices subject to change without notice. State sales tax must be added where applicable. Crating additional when required.

LYNX COMPETITION CARS 23363 Baske Ave. Taylor, Michigan

Brochure



First Race at Waterford Hills Michigan



John Mills in First Car

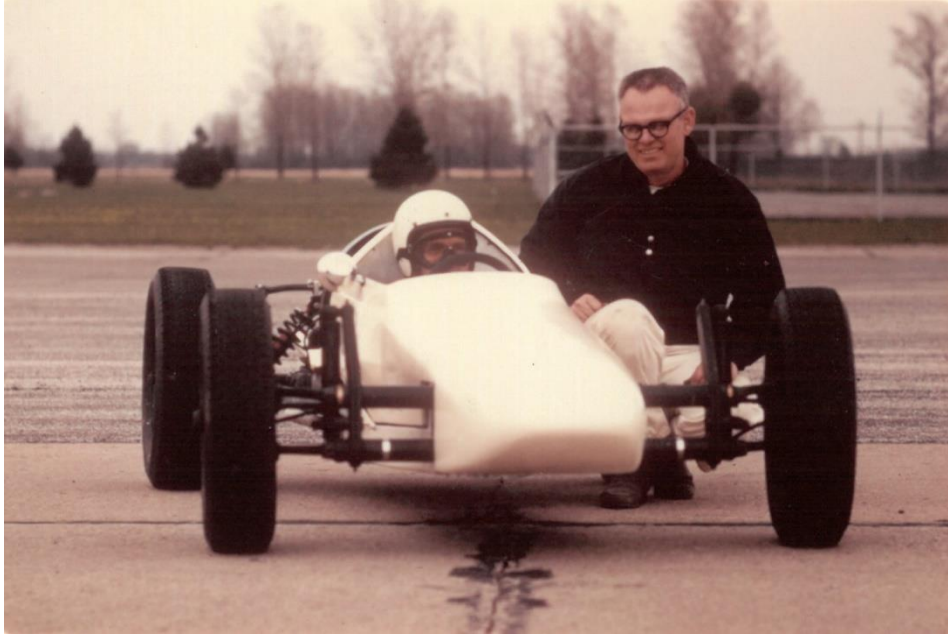
1970 LYNX RECORD

NATIONAL RACES ONLY

<u>Event</u>	<u>Location</u>	<u>1st</u>	<u>Driver's Name</u>		<u>3rd</u>
			<u>2nd</u>		
(1) MIS	Michigan	J. Mills	J. Purcell		G. VanCamp
(2) Milhodbie	Wisconsin		G. VanCamp		
(3) Blackhawk	Illinois		G. VanCamp		J. Mills
(4) Road America	Wisconsin				G. VanCamp
(5) Domneybrook	Wisconsin	J. Mills			
(6) Mid Ohio	Ohio	G. VanCamp			J. Mills
(7) Steel Cities	Ohio	G. VanCamp	G. Sullivan		J. Mills
(8) Grattan	Michigan				J. Mills
(9) Blackhawk	Illinois		J. Mills		G. VanCamp
(10) Mid Ohio	Ohio	G. VanCamp			
(11) Grattan	Michigan	G. VanCamp			
(12) Summit Point	Virginia	G. Sullivan			
(13) Walkin Glen	New York	G. Sullivan			
(14) -	-		G. Sullivan		
(15) -	-		G. Sullivan		
(16) -	-		G. Sullivan		
(17) Ontario	California		Herlinger		
-	California	T. Gouth			
(17) Mid Ohio	Ohio	J. Purcell(SV)			
(20) Bryar	New Hampshire		J. Purcell(SV)		
(21) -	Phoenix	Hettric			
(22) IRP	Indiana	J. Mills(SV)	J. Purcell(SV)		
(23) IRP	Indiana	J. Mills			
(24) Reno	Reno	T. Gouth			
(25) Georgia	Atlanta	G. VanCamp			

16 lap records are held by Lynx Cars, one being set at the ARRC in Atlanta, Georgia.

Race Record from 1970



John and I at First Test for Lynx B



Post Card Sent to Potential Buyers



JIM HERLINGER
1st PLACE (REG.)
SAN FRANCISCO
2nd PLACE (DIV.)
N. PACIFIC

LYNX Type "B"

formula vee

AVAILABLE DEC. 1st

\$1100.

send self addressed envelope.

After one year of track development.
We have the first really STRONG Vee.

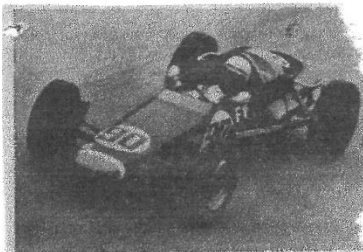
WE WARRANTEE THE MAIN FRAME RAILS FOR 1 YEAR. FREE REPAIR FOR SERIOUS FRAMEDAMAGE!

- KIT includes:** fob TAYLOR
- . Leather covered steering wheel
 - . KONI adj. rear shocks
 - . Special wound rear springs
 - . 3" dia. 270° tach.
 - . Chrome vanadium steel x bar
 - . Tuned exhaust

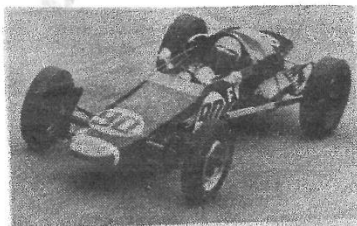
Prices and specifications subject to change without notice.

LYNX COMPETITION CARS
23363 BASKE TAYLOR, MICH

Jim Herlinger, Our West Coast Dealer



LYNX TYPE B FORMULA VEE: \$1195. Wins at MIS, Kent National Races. The safest strongest Vee built, 1150 ft. lbs/degree stiff ladder frame. Main frame members guaranteed 1 year against major damage. Kit includes leather covered steering wheels, Koni rear shocks, Zee bar. Send self address envelope to LYNX CARS, INC., 23363 Baske, Taylor, Mich. 48180; or West Coast Dealer P.E.P., 2423 Old Middlefield, Suite E, Mountain View, Calif. 94040.



LYNX TYPE "B" FV: \$1100 kit includes: Leather covered steering wheel, Koni rear shocks, Z bar. Complete line of Vee accessories available plus custom built exhaust systems. Send self address envelope to: LYNX COMPETITION CARS, 23363 Baske, Taylor, Mich. 48180. West Coast Dealer, Performance Inc., 2185 Middlefield Rd., Mountain View, Calif. 94040. K

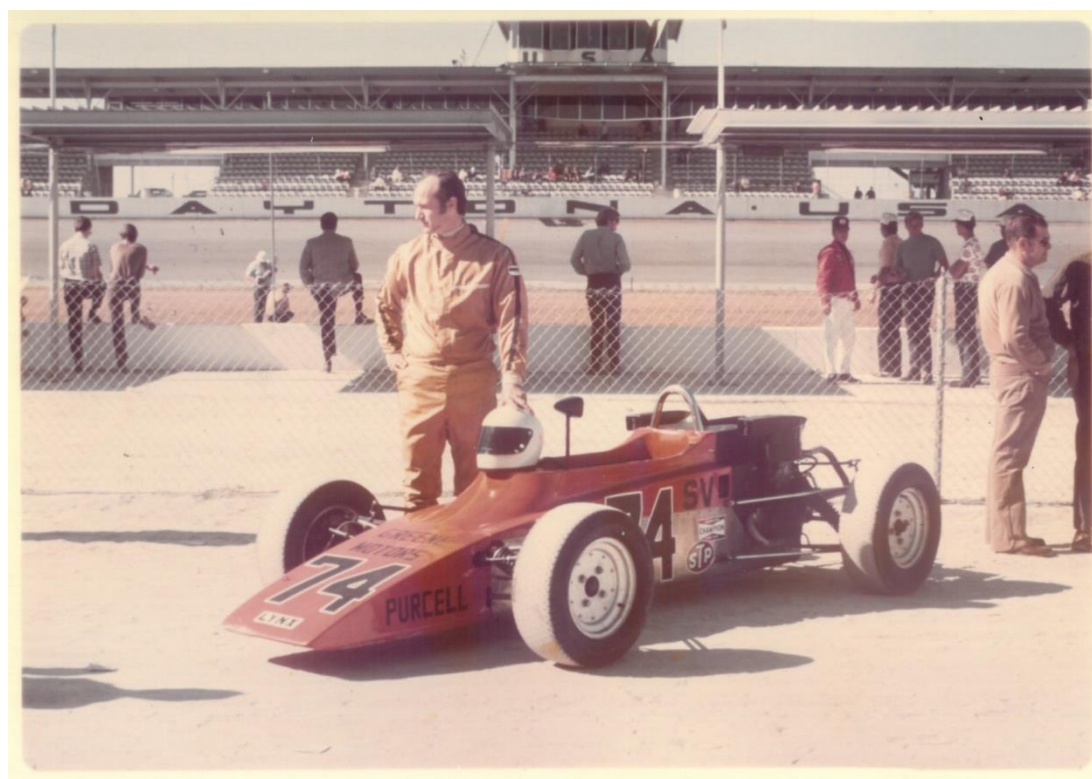


LYNX "D" S/VEE: Finished one two in Central Division; exceptionally strong chassis; dyno developed engines. LYNX "B" F/V: Winner Central and Northern Pacific Divisions; lap record at ARRC. Send \$1 for literature, Lynx Cars Inc. 23363 Baske, Taylor, Mich. 48180; (313) 272-0930. L

Magazine Ad



Garrett VanCamp, Winningest Lynx Driver



Jim Purcell in Lynx Super Vee, A Good Development Driver and Fast